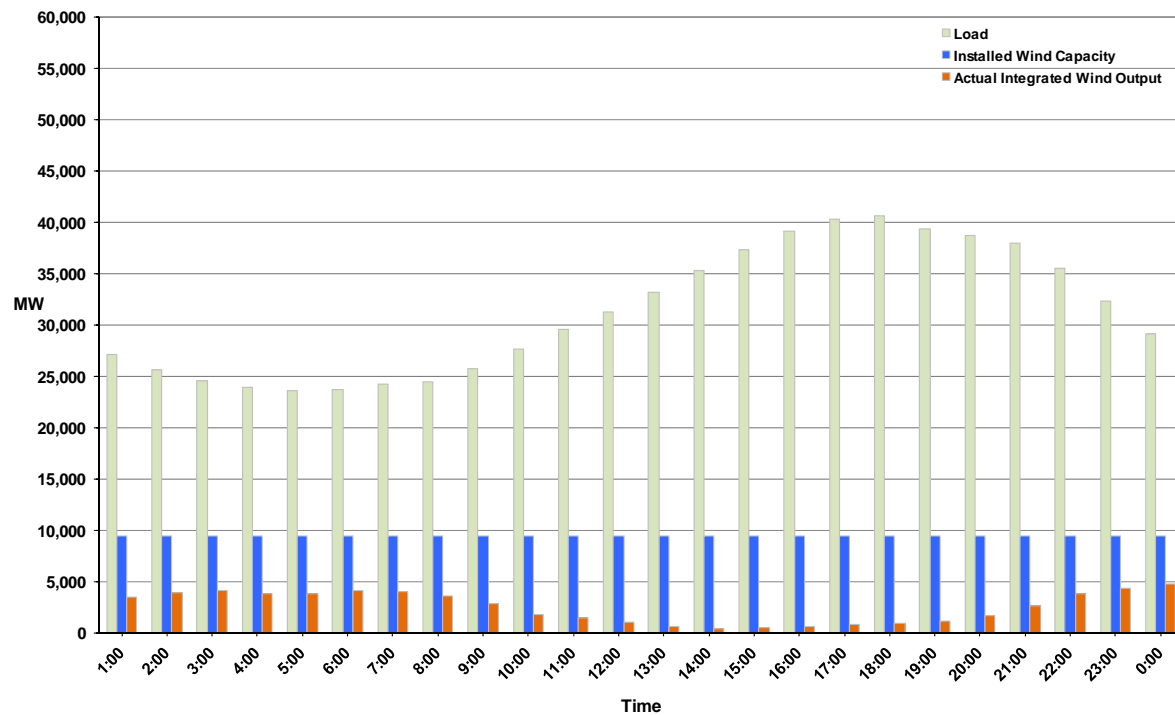




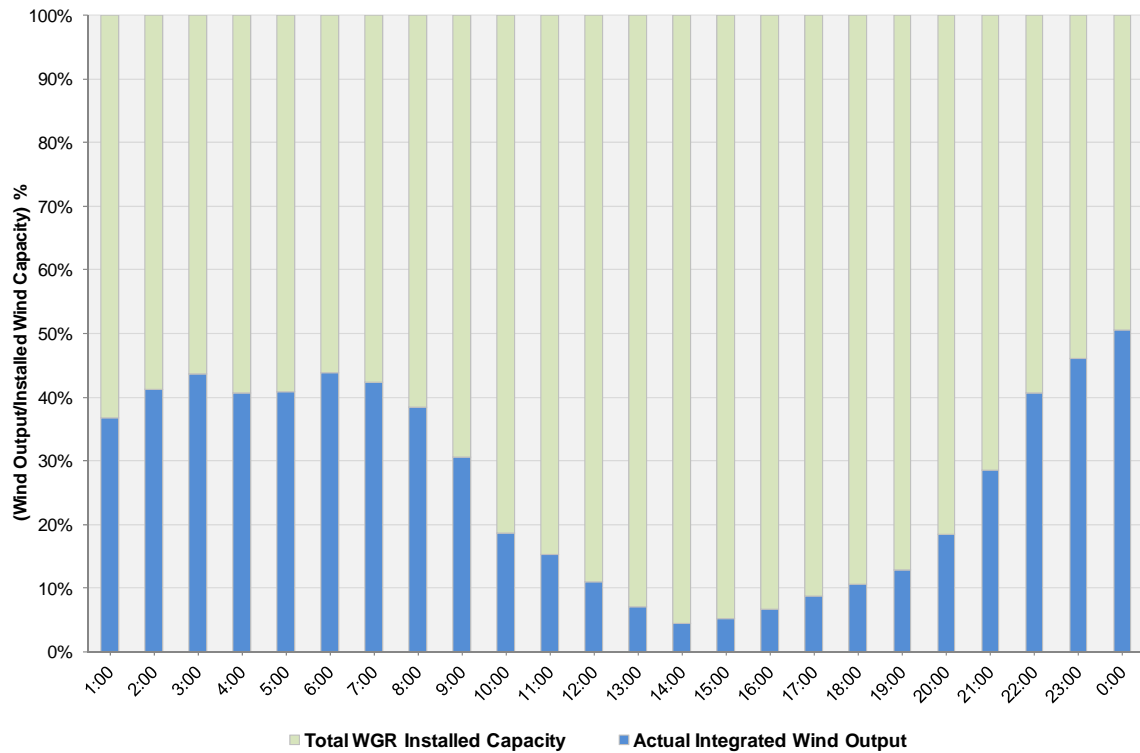
ERCOT Grid Operations Wind Integration Report: 10/02/11

Peak Load	40,613 MW
Load Peak Hour	18
Wind over Peak	1,001 MW
Wind Record 06/19/11	7,355 MW
Max Wind Value	4,828 MW
Wind Peak Time	23:43:32
Wind Integration %	16.86%

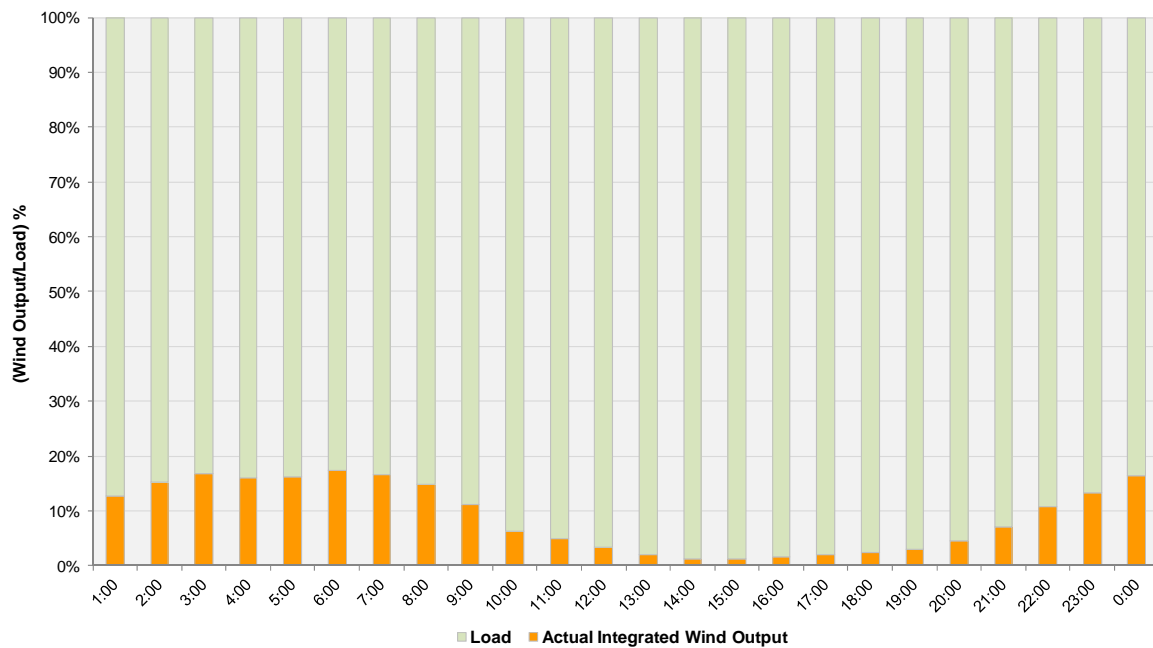
Hourly Average Actual Load vs. Actual Wind Output
10-02-2011



Actual Wind Output as a Percentage of the Total Installed Wind Capacity
10-02-2011



Actual Wind Output as a Percentage of the ERCOT Load
10-02-2011



ERCOT Load vs. Actual Wind Output 9/25/2011 - 10/2/2011

